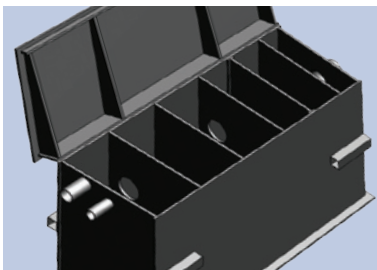
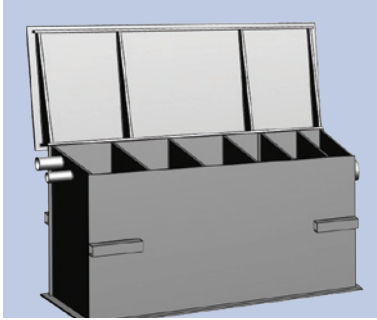


## FilterSepta Mk 2



**PERFORMS AND TESTED TO OUTFLOW REQUIREMENTS OF A CLASS 1 FULL RETENTION OIL/WATER SEPARATOR AND RELEVANT SECTION EN858-1:2002**

**Andel FilterSepta Mk 2** is a highly cost-effective, above-ground oil/water separator that is fitted to the outlet of the Andel BundGuard automatic bund dewatering system.

**Andel FilterSepta Mk 2** performs to the requirements of a Class 1 full retention oil/water separator and relevant section **EN858-1:2002** – less than 5ppm hydrocarbons in water discharged under test conditions.

The unit is recommended for environmentally critical sites where there is no underground drainage and separator system – eliminating the need for extremely costly underground interceptor or separator tanks to be installed and maintained.

**Andel FilterSepta Mk 2** provides peace of mind to site operators whose existing oil/water separating pump systems may need additional support or back up. Though front-line products such as the Andel BundGuard automatic pumping system can provide an effective and reliable solution, some particularly sensitive sites and installations may require an additional safeguard and a more cautious approach.

An integral electronic level controller and optional valve regulates the flow through the unit and **Andel FilterSepta Mk 2** can be incorporated into any new or existing bund water control system.

### Benefits

- Accessible silt trap chamber – easy and safe to empty, clean and maintain
- Accessible coalescing filter media – easy and safe to remove, clean and maintain on site, no need for disposal or replacement
- Lightweight, robust construction from

100% recycled plastic (HDPE). No mechanical lifting equipment required for delivery and installation and well within capacity of a 'two-man lift'

- Robust double-extrusion welded throughout for extreme durability
- Manual lifting lugs positioned to allow for safe lifting below head height – crucial for High Voltage Sites
- No exposed metal parts – eliminating the risk of arcing in High Voltage Sites and minimising metal corrosion
- Extremely high gravity outflow of 3 litres per second (site conditions may vary)
- Sludge volume of 100 litres – allowing for extended maintenance breaks
- Automatic bypass overflow returns water to the bunded area – avoiding contamination to the unit

### Technical data

- Inlet: barbed hose tail to connect 1" ID hose
- Outlet: 100mm discharge pipe
- Automatic bypass overflow (water return to bunded area)
- Nominal height: 824mm
- Nominal width: 500mm
- Nominal length: 1200mm
- Total liquid retention capacity: 300 litres
- Sludge volume: 100 litres
- Maximum oil storage: 70 litres, 150mm oil layer
- Maximum chamber depth: 710mm (allows for easy cleaning and maintenance as and when required)
- Typical flow rates: around 3 litres/second (depending on site conditions)



DS FilterSepta Mk 2 05.19